



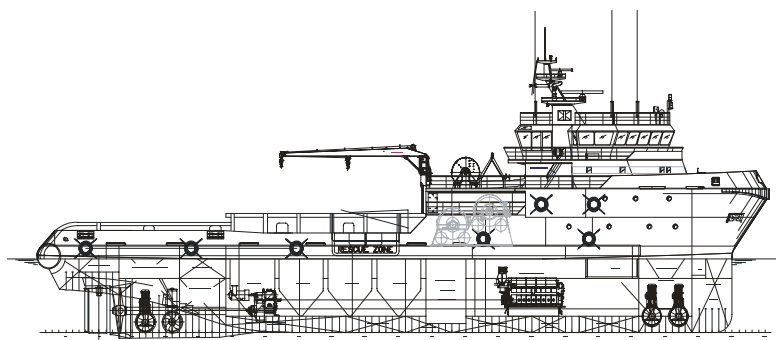
Prolific AHTS series

Swire Pacific Offshore Selects Complete Propulsion Solutions

6 October 2005. MAN B&W Diesel has been awarded the contract to supply complete twin-screw medium speed propulsion packages for six Anchor Handling Tug Supply Vessels (AHTS). The newbuildings, which will be built by Labroy Shipyard, Batam, Indonesia (Labroy Shipbuilding and Engineering Pte Ltd, Singapore) are to be operated by Swire Pacific Offshore Limited, Singapore.

The first newbuilding is expected to be launched in the beginning of 2007, and the following vessels are planned to follow at two month intervals.

The 120 ton bollard pull AHTS vessels have been designed by the UK-based IMT Marine Consultants Ltd, with specific optimisation for the worldwide operation of Swire Pacific Offshore activities.



General arrangement of the IMT-designed AHTS for Swire Pacific

MAN B&W Diesel A/S

Niels Juels Vej 15

9900 Frederikshavn

Denmark

Tel.: +45 96 20 41 00

Fax.: +45 96 20 40 30

www.manbw.com

For further information,
please contact:

Torben Klingenberg

PR & Documentation

Tel.: +45 96 20 42 43

tok@dk.manbw.com



Senior Sales Manager of MAN B&W Diesel's International Offshore Group, Mr Steven Birdsall, explains: "Three decisive factors were behind Swire's choice of MAN B&W Diesel:

1) The ability to procure a total propulsion package from the same manufacture, which included the main engines, gearboxes, shafting, propellers, nozzles and the propulsion control and management system.

2) The capability of having the same series engine to cover all of their propulsion power requirements on varying-sized AHTS's (60 to 120 ton bollard pull) and thereby having the possibility of interchangeability of spare parts and trained engineers, whom could be transferred from vessel to vessel.

3) MAN B&W's willingness to 'tailor make' a perfect matching propulsion package, tuned to meet Swire's specific operational requirements for present and future projects."

Principal Particulars - 120 ton bollard pull AHTS

| | |
|----------------|---|
| Length oa | 66.0 m |
| Length pp | 57.0 m |
| Breadth | 16.0 m |
| Depth | 7.30 m |
| Draught | 6.20 m |
| Deadweight | 2100 t |
| Propulsion | 2 x MAN B&W 9L27/38-VBS packages |
| Classification | ABS Class +A1, Offshore Support & Towing Vessel, +AMS, + ACCU |

MAN B&W Diesel A/S

Niels Juels Vej 15

9900 Frederikshavn

Denmark

Tel.: +45 96 20 41 00

Fax.: +45 96 20 40 30

www.manbw.com

For further information,
please contact:

Torben Klingenberg

PR & Documentation

Tel.: +45 96 20 42 43

tok@dk.manbw.com



Propulsion Package

A total main engine output of 2 x 3,285 kW will supply the propeller thrust, for a bollard pull of more than 120 metric tons. The ship service speed is optimised for 13.5 knots. The MAN B&W Diesel twin-screw Alpha Propulsion System type 9L27/38-VBS, which has been specified for the newbuildings, include:

- Main Engines

Two MAN B&W 9L27/38 engines, fitted with full engine power PTO and integrated journal bearing at the front-end, driving a fire-fighting pump arrangement.

- Reduction Gearboxes

Two MAN B&W Alpha AMG55 gearboxes, type 57VO55EV, with a speed reduction ratio of 800:141. Additionally, each gearbox is equipped with a 1,800 r/min PTO shaft for a 1600 kVA shaft alternator.

- Propellers

Two MAN B&W Alpha type VBS980 four-bladed controllable pitch propellers. The 3,800 mm ducted CPP systems are complete with tail, intermediate shafts and bearings, stern tube equipment, and MAN B&W fixed propeller nozzles type AHT.

- Control System

In addition to the engine room control station, the Alphatronic 2000 Monitoring, Control and Safety System

MAN B&W Diesel A/S

Niels Juels Vej 15

9900 Frederikshavn

Denmark

Tel.: +45 96 20 41 00

Fax.: +45 96 20 40 30

www.manbw.com

For further information,
please contact:

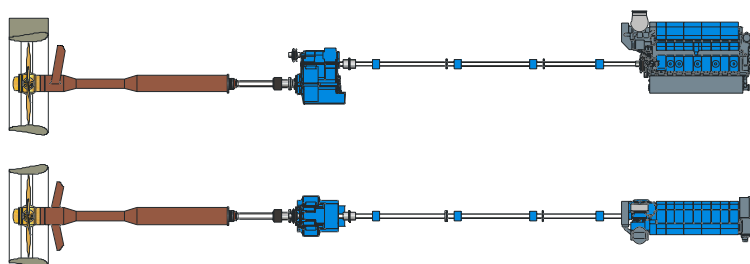
Torben Klingenberg

PR & Documentation

Tel.: +45 96 20 42 43

tok@dk.manbw.com

includes a main bridge control station and an aft bridge slave control station. The propulsion control is interfaced to a Joystick/Dyn Pos System, which manages the overall ship manoeuvring via gyro compass, rudders and thrusters.



Side and top view of the port-side propulsion system arrangement

About Swire Pacific

The Swire Group traces its origins to 1816, when its parent company, John Swire & Sons, was founded in Liverpool in the United Kingdom. While the interests of the Swire Group are now global in scope, its activities are concentrated in the Asia Pacific region and centred, in particular, on Hong Kong. The majority of its businesses in the Asia Pacific region are held through Swire Pacific Limited which is organised into five operating divisions: property, aviation, industries, trading and marine services, of which the Swire Pacific Offshore Group is a major component. Swire Pacific Offshore Ltd is one of the largest offshore support vessel owners headquartered in Asia. By the end of 2005, the company's fleet will stand close to 60 ships, including 29 new anchor handling tug supply vessels ordered since 1997.

About MAN B&W Diesel

MAN B&W Diesel is the World's leading designer of large-bore diesel engines. The company designs two- and four-stroke diesel engines, generating sets, turbochargers and CP propellers, which are manufactured by MAN B&W Diesel and its licensees. Engine outputs range from 800 to 97,300 kW. MAN B&W Diesel has approximately 6,700 employees, located in Germany, Denmark, UK, France, Czech Republic and China. The company's worldwide service network consists of Authorised Repair Shops and service centres. MAN B&W Diesel is a subsidiary of the German industrial group MAN AG.

MAN B&W Diesel A/S

Niels Juels Vej 15

9900 Frederikshavn

Denmark

Tel.: +45 96 20 41 00

Fax.: +45 96 20 40 30

www.manbw.com

For further information,
please contact:

Torben Klingenberg

PR & Documentation

Tel.: +45 96 20 42 43

tok@dk.manbw.com